

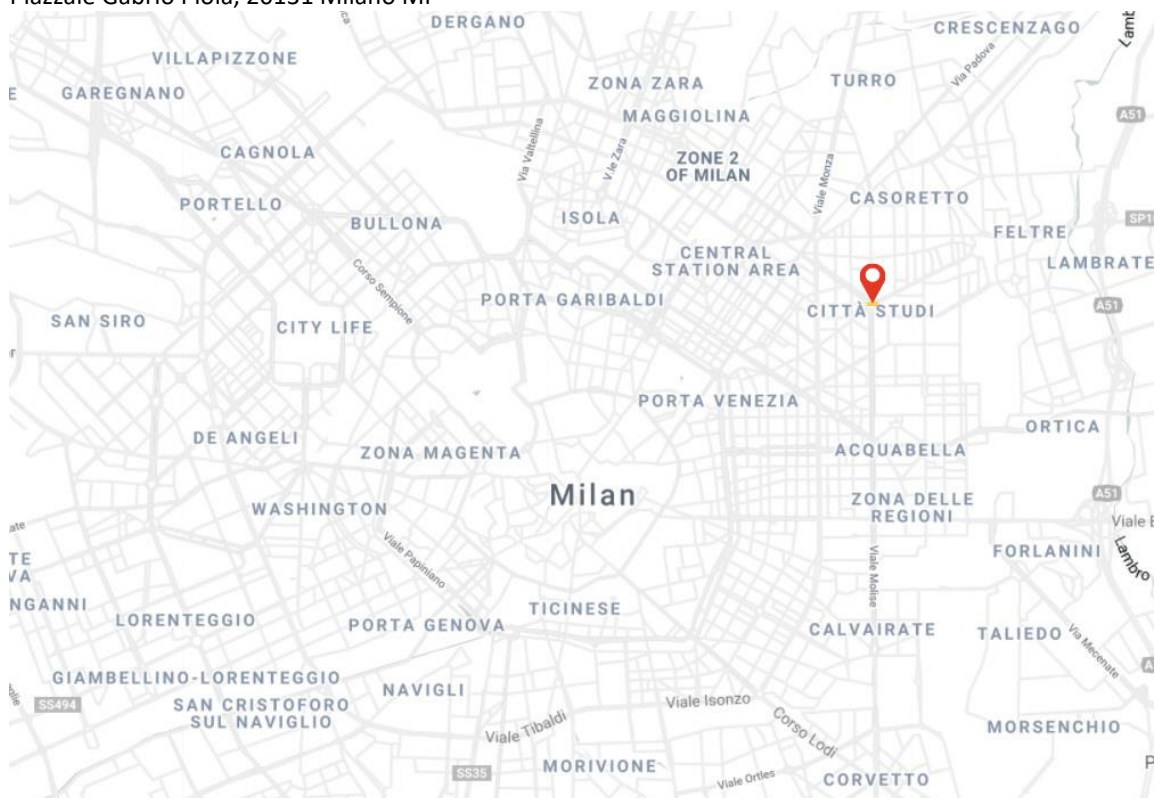
PRZESTRZEŃ PUBLICZNA / PUBLIC SPACE – NAZWA / NAME

Lokalizacja / location

.....Piazza Piola.....

Lokalizacja / location

Lokalizacja na mapce / location no the map
Piazzale Gabrio Piola, 20131 Milano MI



Data i godzina obserwacji/ date and time of the observation

13:20-13:45, 17 November, 2021

Informacje ogólne / General information

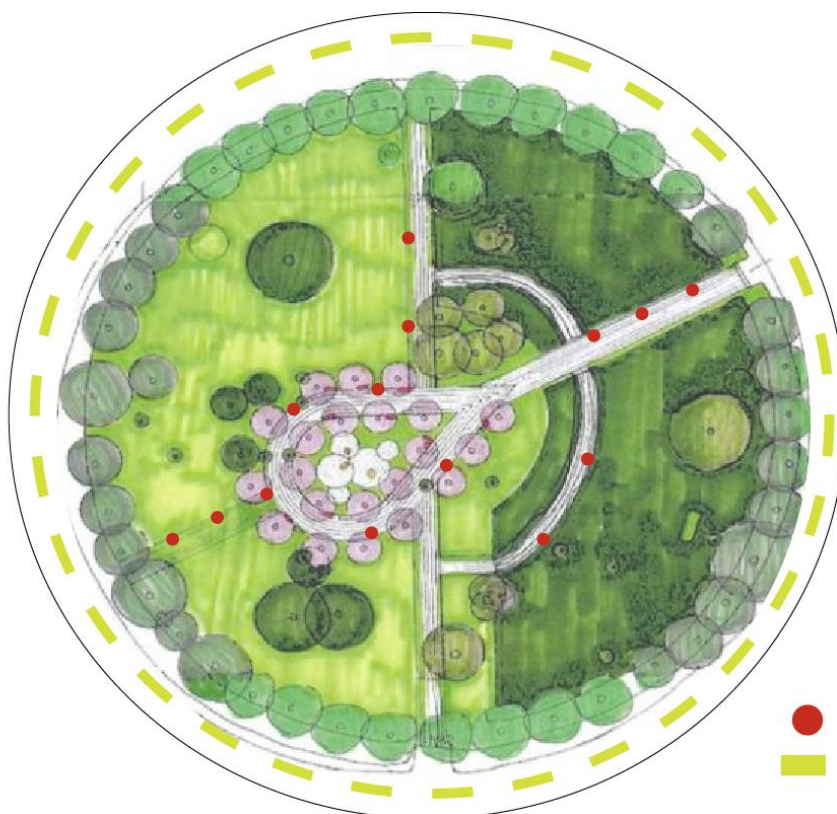
The site is near the metro station(Piola), and surrounded by car road.
The shape of area is precise circle.

PRACA NA MAPIE - zaznaczyć symbolami:

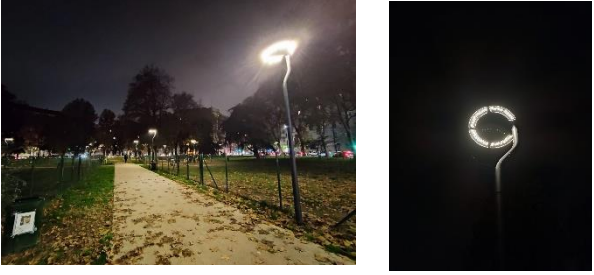
- Oświetlenie uliczne – SL
- Oświetlenie parkowe – PL
- Sygnalizacja świetlan – TL
- Oświetlenie elewacji, obiektów – BL
- Oświetlenie dekoracyjne – DL
- Inne – OL

Work on map – put symbols of:

- Street light – SL
- Park light – PL
- Traffic light – TL
- Objects or elevations illumination – BL
- Decorational illumination – DL
- Other - OL



- PL (PARK LIGHT)
- ▬ OL (VEHICLE LIGHT)

<p>ASPEKTY FUNKcjONALNO - ESTETYCZNE – czy przestrzeń wydaje się właściwie oświetlona widoczność i nastrój FUNCTIONAL/AESTHETIC ASPECTS OF SPACE –space seems to be properly lit in terms of function and mood</p>	<p>Because the site is on the centre of the traffic circle, the space is often looked by many people. Many people or cars use this area, so the mood is relatively lively (but it could also be said negative points as noisy).</p>					
<p>STYLISjTYKA OPRAW (zdjęcia)/ DESIGN OF LIGHTING FIXTURES (photos)</p>						
<p>KOMPOZYCJA - układ i rozmieszczenie widocznych elementów oświetlenia placu / COMPOSITION Layout and arrangement of visible elements of artificial illumination of the space</p>	<p>Wydobycie walorów przestrzeni/ highlighting the value of the public space – yes / no YES</p> <table border="1" data-bbox="371 931 1556 1323"> <tr> <td data-bbox="371 931 643 1193"> <p>Rozmieszczenie opraw – tworzenie grup, rytmu itp. / arrangement of lighting fixtures – creating groups, yes / no rhythm etc yes / no</p> </td> <td data-bbox="643 931 1556 1193"> <p>According to redesign of this area there is a great arrangement of electric light poles inside the piazza which covers the main entrance and the inner route. There are no groups of artificial illumination inside this area There is rhythm of keeping the lights in piazza with same distance between.</p> </td> </tr> <tr> <td data-bbox="371 1193 643 1323"> <p>Tworzenie efektów iluzorycznych / creating illusory effects yes / no</p> </td> <td data-bbox="643 1193 1556 1323"> <p>There are authentic effects in Piazza Piola.</p> </td> </tr> </table>		<p>Rozmieszczenie opraw – tworzenie grup, rytmu itp. / arrangement of lighting fixtures – creating groups, yes / no rhythm etc yes / no</p>	<p>According to redesign of this area there is a great arrangement of electric light poles inside the piazza which covers the main entrance and the inner route. There are no groups of artificial illumination inside this area There is rhythm of keeping the lights in piazza with same distance between.</p>	<p>Tworzenie efektów iluzorycznych / creating illusory effects yes / no</p>	<p>There are authentic effects in Piazza Piola.</p>
<p>Rozmieszczenie opraw – tworzenie grup, rytmu itp. / arrangement of lighting fixtures – creating groups, yes / no rhythm etc yes / no</p>	<p>According to redesign of this area there is a great arrangement of electric light poles inside the piazza which covers the main entrance and the inner route. There are no groups of artificial illumination inside this area There is rhythm of keeping the lights in piazza with same distance between.</p>					
<p>Tworzenie efektów iluzorycznych / creating illusory effects yes / no</p>	<p>There are authentic effects in Piazza Piola.</p>					
<p>BEZPIECZEŃSTWO – CZY CZUJESZ SIĘ BEZPIECZNIE / SAFETY – DO YOU FEEL SAFE</p>	<p>The biggest problem of this site is the location which surrounded by the car road as a centre of the traffic circle. It is not safty for children and elder people to cross the road from outside of this site and enter there. And also the site has few entrances (only one main entrance) and the lack of accessibility, so people could be concentrated in the street near the entrance.</p>					
<p>NASTRÓJ – CZY OŚWIETLENIE TWORZY NASTÓJ, JEŚLI TAK TO JAKI / MOOD – DOES LIGHTING CREATE A MOOD, IF SO HOW DO YOU FEEL IT</p>	<p>The park lights don't work to create lively mood so much. However, because of the traffic circle, the car lights surrounding the site always make it change the face (atmosphere) of the piazza.</p>					